

# Let the Sun Shine On

1 **TOWNSPEOPLE:**

*f* Na na na hei - a na

3

na hi ja na Na hei - a hei - a na ja

5

no a ha na hei o no a na

**Opt. descant**

7

Ha ha ja Na na ha na ha

9

ha ja na Na hei - a hei - a na ja

11

Na na ha na ha ha ja

no a ha na hei o no a na

(YOUNG ELSA and YOUNG ANNA enter, playing.  
They are sisters, best friends.)

14

2

16

**YOUNG ANNA:**

Do you want to build a snow-man?

18

Come on! Let's go and play!

20

**YOUNG ELSA:**

I could co-ver this whole place in snow! I'm not sup-

22

**YOUNG ANNA:**

(really mischievous)

posed to, though. Yeah. Just do it an - y -

24



way!

Do it for your sis - ter! El - sa,

27



please, oh please! I can't do the things you

**YOUNG ANNA:**

You know I do!

29

**YOUNG ELSA:**

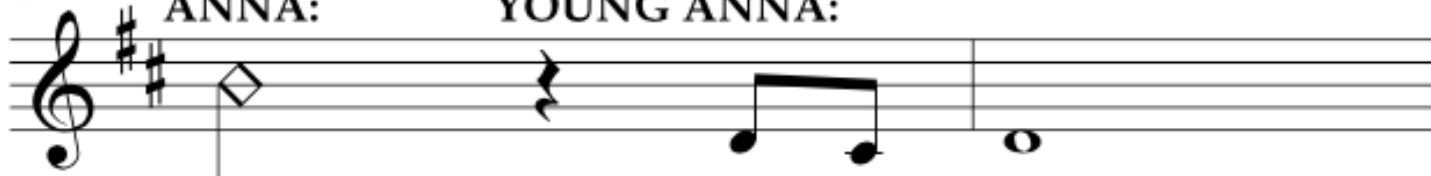
do! You real - ly want to build a snow-man?

32



We'll stay up late and build that snow-man!

34

**YOUNG ANNA:****YOUNG ELSA,  
YOUNG ANNA:**

Yess!!

Me and you!

36

*(The SISTERS hug. KING AGNARR and QUEEN IDUNA enter and join their daughters. The festivities continue.)*

